



Entry 1 School Information

Created: 07/08/2016

Last updated: 08/01/2016

Please be advised that you will need to complete this cover page (including signatures) before all of the other tasks assigned to you by your authorizer are visible on your task page. While completing this task, please ensure that you select the correct authorizer or you may not be assigned the correct tasks.

Page 1

a. SCHOOL NAME AND BEDS#

(Select name from the drop down menu)

HARLEM CHILDREN'S ZONE PROMISE ACADEMY CS (NYC CHANCELLOR) 310500860864

b. CHARTER AUTHORIZER

(For technical reasons, please re-select authorizer name from the drop down menu).

NYCDOE-Authorized Charter School

c. DISTRICT / CSD OF LOCATION

NYC CSD 5

d1. SCHOOL INFORMATION

	PRIMARY ADDRESS	PHONE NUMBER	FAX NUMBER	EMAIL ADDRESS
	245 West 129th Street	646-556-6275	212-281-0804	candice.ashby@hczpromise.org

d2. PHONE CONTACT NUMBER FOR AFTER HOURS EMERGENCIES

Contact Name	Achil Petit
Title	Superintendent

Emergency Phone Number (###-###-####)

917-749-9430

e. SCHOOL WEB ADDRESS (URL)

hczpromise.org

f. DATE OF INITIAL CHARTER

09/2004

g. DATE FIRST OPENED FOR INSTRUCTION

09/2004

h1. APPROVED SCHOOL MISSION (Regents, NYCDOE, and Buffalo BOE authorized schools only)

MISSION STATEMENT

The mission of the Harlem Children’s Zone Promise Academy II Charter School II (HCZ Promise Academy II) is to provide high quality, standards-based academic programs for students, grades K-12, from underserved communities and underperforming school districts, and to provide students with the skills they need to be accepted by and succeed in college. HCZ Promise Academy II promotes high achievement in all subjects through a demanding curriculum, extensive supportive services and the use of data-driven teaching methods. HCZ Promise Academy II is committed to promoting academic accomplishment, positive character development, healthy lifestyles and leadership skills. In partnership with the Harlem Children’s Zone, HCZ Promise Academy II addresses the educational and developmental needs of each student.

h2. KEY DESIGN ELEMENTS (Regents, NYCDOE, and Buffalo BOE authorized schools only)

KEY DESIGN ELEMENTS (Brief description)

Variable 1

Extended school day and year - Part of the Promise mission is to “provide students with the skills they need to be accepted by and succeed in college.” One of the ways in which the school achieves this mission is by having an extended school year and

	<p>days so that students may benefit from spending increased time in structured and productive academic environments. PAI has an academic year of 202 days, surpassing the 180 days required by law. School days are from 8AM to 4PM with a robust after-school program from 4PM to 6PM.</p>
Variable 2	<p>Data-driven instruction - The Promise Academy I teaching philosophy is centered around the notion that all students have different instructional needs, and it is our job to find ways to identify and address those needs. Small-group instruction and tutoring that is offered as part of an extended day, extended year, and after-school program have been and will continue to be an integral piece to achieving high academic outcomes.</p>
Variable 3	<p>College-Readiness - To ensure that students in PAI have the best chance for academic success, the school has consistently aligned itself with collaborative programs. The Bard Early College Program has been a useful tool in helping our children to be college-ready. The academic skills that they are learning in their pre-college seminar courses are giving them the skills they need to succeed in college, while also allowing students to earn college credits.</p>
Variable 4	<p>Parent Engagement - PAI has a thriving program called Parents as Partners Association (PAPA) in which members are instrumental in maintaining strong ties between the school and the families of the students.</p>
Variable 5	<p>Aligned with CCLS - Work to align our teaching strategies and interim assessment system to the Common Core State Standards, remains underway. Promise Academy continues to improve in this practice and has strengthened how we use data to make decisions on a district, school, class and individual student level.</p>
Variable 6	<p>Recruitment - We recruit high quality teachers and school leaders from around the country. We employ a variety of recruitment sourcing strategies, which include teacher recruitment fairs and events, campus recruitment, internet job postings, newspaper and other media advertisement, active candidate sourcing and recruiting, employee referrals and Teach for America. We have also recently hired a recruiter whose main purpose is to identify talented teachers from quality institutions.</p>
Variable 7	<p>Pipeline Services - Promise believes that all children should have the same starting point from which to grow. That is why our pipeline of services is so</p>

	important for our families, as well as the additional services we offer, such as healthy and hearty nutrition, access to health and mental health services, foster care prevention, and after-school, weekend and summer hours. Our pipeline of services ensures that our students begin on the same playing field as children from more affluent communities.
Variable 8	(No response)
Variable 9	(No response)
Variable 10	(No response)

i. TOTAL ENROLLMENT ON JUNE 30, 2016

1091

j. GRADES SERVED IN SCHOOL YEAR 2015-16

Check all that apply

Grades Served	K, 1, 2, 3, 4, 5, 6, 7, 8, 9, 10, 11, 12
---------------	--

k1. DOES THE SCHOOL CONTRACT WITH A CHARTER OR EDUCATIONAL MANAGEMENT ORGANIZATION?

No

Page 2

I1. FACILITIES

Does the school maintain or operate multiple sites?

	No, just one site.
--	--------------------

I2. SCHOOL SITES

Please list the sites where the school will operate for the upcoming school year.

--	--	--	--	--	--	--	--

	Physical Address	Phone Number	District/CSD	Grades Served at Site	School at Full Capacity at Site	Facilities Agreement
Site 1 (same as primary site)	245 West 129th Street	646-556-6275	CSD 5	K-12	Yes	Rent/Lease
Site 2						
Site 3						

l2a. Please provide the contact information for Site 1.

	Name	Work Phone	Alternate Phone	Email Address
School Leader	Dr. Achil Petit	646-582-1200	646-556-6283	achil.petit@hczpromise.org
Operational Leader	Ari Browne	646-556-6283	347-852-1624	ari.browne@hczpromise.org
Compliance Contact	Candice Ashby	646-556-6283	347-387-6835	candice.ashby@hczpromise.org
Complaint Contact	Candice Ashby	646-556-6283	347-387-6835	candice.ashby@hczpromise.org

m1. Is the school or are the school sites co-located?

No

Page 3

n1. Were there any revisions to the school's charter during the 2015-16 school year? (Please include approved or pending material and non-material charter revisions).

No

o. Name and Position of Individual(s) Who Completed the 2015-16 Annual Report.

Candice Ashby, Director of Compliance and Reporting; Ari Browne, Director of Information Systems; and Dr. Achil Petit, Superintendent

p. Our signatures below attest that all of the information contained herein is truthful and accurate and that this charter school is in compliance with all aspects of its charter, and with all pertinent Federal, State, and local laws, regulations, and rules. We understand that if any information in any part of this report is found to have been deliberately misrepresented, that will constitute grounds for the revocation of our charter. Check **YES if you agree and then use the mouse on your PC or the stylist on your mobile device to sign your name).**

Responses Selected:

Yes

Signature, Head of Charter School

A large, stylized handwritten signature in black ink on a light gray background. The signature is highly cursive and abstract, featuring several large loops and a long horizontal tail extending to the right.

Signature, President of the Board of Trustees

A handwritten signature in black ink on a light gray background. The signature is cursive and appears to read "Aunt".

Date

2016/07/08

Thank you.



Entry 2 Link

Created: 07/08/2016

Last updated: 08/01/2016

Page 1

1. NEW YORK STATE REPORT CARD

Provide a direct URL or web link to the most recent New York State School Report Card for the charter school (See <https://reportcards.nysed.gov/>).

(Charter schools completing year one will not yet have a School Report Card or link to one. Please type "URL is not available" in the space provided).

<https://data.nysed.gov/reportcard.php?instid=800000057519&year=2015&createreport=1&enrollment=1&avgclasssize=1&freelunch=1&attendance=1&suspensions=1&teacherqual=1&teacherturnover=1&staffcounts=1&38ELA=1&38MATH=1&48SCI=1&naep=1®ents=1&elemELA=1&elemMATH=1&elemSci=1&unweighted=1&gradrate=1>



Entry 3 Progress

Created: 07/08/2016

Last updated: 11/01/2016

Page 1

PROGRESS TOWARD CHARTER GOALS

The following tables reflect formatting in the online portal required for Board of Regents-authorized charter schools and NYCDOE-authorized charter schools only. Schools should list Progress Toward Charter Goals by August 1, 2016. If the goals are based on student performance data that the school will not have access to before August 1, 2016 (e.g., the NYS Assessment results), explain this in the "2015-2016 Progress Toward Attainment of Goal" column. The information can be updated when available. Please complete and submit no later than November 1, 2016.

1. ACADEMIC STUDENT PERFORMANCE GOALS

2015-16 Progress Toward Attainment of Academic Goals

	Academic Student Performance Goal	Measure Used to Evaluate Progress Toward Attainment of Goal	Goal - Met, Partially Met, or Not Met	If Not Met, Describe Efforts School Will Take
Academic Goal 1	Throughout the course of the school's next charter term, it will earn a score of B or better in "Performance" section of the citywide Progress Report.	NYC DOE Progress Reports	N/A: The DOE no longer produces graded progress reports.	
	Throughout the course of the school's next charter term, the school will show progress towards achieving earning 75 percent of 3-8		Goal met: In 14-15, 25.7% of the 3rd-8th graders who had been at the school for two or more years earned a level 3 or above on the ELA exam. In 15-16, 39.8% of	

Academic Goal 2	<p>graders who have been enrolled at the school on BEDS day for at least two consecutive years will perform at or above Level 3 on the New York State ELA examination.</p>	NYS ELA Exam scores	<p>the 3rd-8th graders who had been at the school for two or more years earned a level 3 or above on the ELA exam. This increase indicates progress toward 75% proficient.</p>	
Academic Goal 3	<p>Throughout the course of the school's next charter term, the school will show progress towards achieving 75 percent of 3—8 graders who have been enrolled at the school on BEDS day for at least two consecutive years will perform at or above Level 3 on the New York State Mathematics examination.</p>	NYS Math Exam scores	<p>Goal met: In 14-15, 50.5% of 3rd-8th graders who had been at the school for two or more years earned a level 3 or above on the math exam. In 15-16, 57.1% of 3rd-8th graders who had been at the school for two or more years earned a level 3 or above on the math exam. This increase indicates progress toward 75% proficient.</p>	
Academic Goal 4	<p>Throughout the course of the school's next charter term, the school will show progress towards achieving 75 percent of 4th and 8th graders who have been enrolled at the school on BEDS day for at least two consecutive years will perform at or above Level 3 on</p>	NYS Science Exam scores	<p>Goal partially met: In 14-15, 96.4% of 4th graders and 52.8% of 8th graders who have been at the school for two or more years earned a level 3 or above on the science exam. In 15-16, 98.8% of 4th graders and 48.5% of 8th graders who had been at the school for two or more years earned a level 3 or above on</p>	<p>In the past 2 years, we've provided more opportunities for teachers to collaborate and design interdisciplinary lessons. These lessons particularly in the 8th grade, focus on incorporating scientific principles into other areas of study. We are also increasing our focus in ELA, since research has shown that reading comprehension is linked to achievement in science. In addition</p>

	the New York State Science examination		the science exam. 4th grade students met the goal. However, 8th grade students did not.	to this practice, we are hiring additional reading specialists, increasing professional development for science teachers and have our best teachers lead PDs.
Academic Goal 5	Throughout the course of the school's next charter term, the school will show progress towards earning a score of B or better on the "Progress" section of the citywide Progress Report.	NYC DOE Progress Reports	N/A: The DOE no longer produces graded Progress Reports.	
Academic Goal 6	Throughout the next charter term, each grade-level cohort of the same students (i.e. students who are in the school for two years in a row) will reduce by a quarter the gap between the percent at or above Level 3 on the previous year's State ELA exam (baseline) and 75 percent at or above Level 3 on the current year's State ELA exam. For schools in which the number of students scoring above proficiency in a grade level cohort exceeded 75 percent on the previous year's ELA exam, the school is expected to demonstrate some growth (above 75 percent) in the	NYS ELA Exams scores	Goal not met: Matched cohorts of students who took the ELA test in both 14-15 and 15-16 and had been at the school for two or more years in 15-16 were created. In this matched cohort, 25.3% of students were proficient in 14-15 and 35.0% were proficient in 15-16. In order to meet the goal of a	In addition to our recruitment manager focusing on obtaining high quality teachers, we are standardizing instructional improvement cycles and creating processes for teachers to regularly practice lessons and receive real-time feedback and coaching. The Curriculum Office is creating lesson plans for the teachers to ensure consistency and rigor, as well as

	<p>current year (relevant for schools serving grades 3-8). (For measuring this goal, the difference will be calculated by subtracting the percentage of students who scored proficient on the NYS ELA test enrolled at the school on BEDS day of year 1 of the new charter term from the percentage of the same students who scored proficient on the NYS ELA test in year 2 of new charter term and were continuously enrolled for two consecutive years on BEDS day.)</p>		<p>25% increase in the difference between 25.3 and 75, the proficiency rate would have to increase by 12.4 points from 14-15 to 15-16. Because the proficiency rate increased by 9.7 points, we did not meet this goal.</p>	<p>performing classroom observations. We are also hiring additional reading specialists, increasing professional development for English teachers and are having our top performing teachers lead PDs. We have also incorporated Relay Principal Fellowship training.</p>
<p>Academic Goal 7</p>	<p>Throughout the next charter term, each grade-level cohort of the same students will reduce by a quarter between the percent at or above Level 3 on the previous year's State Math exam (baseline) and 75 percent at or above Level 3 on the current year's State Math exam. For schools in which the number of students scoring above proficiency in a grade level cohort exceeded 75 percent on the previous year's Math exam, the school is expected to demonstrate</p>	<p>NYS Math Exams</p>	<p>Goal not met: Matched cohorts of students who took the math test in both 14-15 and 15-16 and had been at the school for two or more years in 15-16 were created. In this matched cohort, 53.0% of students were proficient in 14-15 and 51.8% were proficient in</p>	<p>In addition to hiring a recruitment manager to ensure that quality teachers are hired, we have also increased professional development for math teachers and are having our top performing teachers lead PDs.</p>

	<p>growth (above 75 percent) in the current year. (Relevant for schools serving grades 3-8.) (For measuring this goal, the difference will be calculated by subtracting the percentage of student who scored proficient on the NYS MATH test enrolled at the school on BEDS day of year 1 from the percentage of the same students who scored proficient on the NYS MATH test in year 2 and were continuously enrolled for two consecutive years on BEDS day)</p>	<p>scores</p>	<p>15-16. In order to meet the goal of a 25% increase in the difference between 53 and 75, the proficiency rate would have to increase by 5.5 points from 14-15 to 15-16. Because the proficiency rate decreased by 1.2 points, we did not meet this goal.</p>	<p>Principals are also spending more time in classroom observations along with learning specialists to provide feedback and support. We have also incorporated Relay Principal Fellowship training.</p>
<p>Academic Goal 8</p>	<p>Throughout the next charter term, the school will show progress towards having 75% of students enrolled in grades 9-11 accumulate 10 or more credits towards graduation. The school will be accountable for all credits accumulated by students who were continuously enrolled in the school including students who have dropped out or enrolled in an accredited GED program, however, excluding the credits accumulated by</p>	<p>Annual Credit Accumulation for high school students</p>	<p>N/A: The NYC DOE progress report is not yet available.</p>	

	<p>students who have transferred from or to another school, were incarcerated, left the country, or died during the school year. The school will report this each September by submitting a report of student credit accumulation from the previous school year for purposes of the NYC DOE Progress Report.</p>			
--	--	--	--	--

2. Do have more academic goals to add?

Yes

2015-16 Progress Toward Attainment of Academic Goals

	Academic Student Performance Goal	Measure Used to Evaluate Progress Toward Attainment of Goal	Goal - Met, Partially Met, or Not Met	If Not Met, Describe Efforts School Will Take
Academic Goal 9	Each year, 75% of each cohort who have been in high school for at least 3 years will have scored at least 65 on the New York State Regents examinations in ELA.	NYS English Regents Exams	Goal met: 100% of cohort R and 95% of cohort S have scored at least a 65 on the ELA Regents exam.	
Academic Goal 10	Each year, 75% of each cohort will have scored at least 65 on the	NYS Math Regents	Goal partially met: 100% of cohort R, 95% of cohort S, 91% of cohort T, and 71% of cohort	During our transition to the new, more rigorous, Common Core-based curriculum and exam, we anticipated that many students would need more than a single year

	New York State Regents examinations in Math.	Exams	U have scored at least a 65 on a math Regents exam.	to pass the exam. We are continuing to work with cohort U on Algebra concept. We expect the passing rate to increase and hope to be at the 75% target by June 2017.
Academic Goal 11	Each year, 75% of each cohort will have scored at least 65 on the New York State Regents examinations in Science (Living Environment, Chemistry, or other).	NYS Science Regents Exams	Goal partially met: 100% of cohort R, 100% of cohort S, 99% of cohort T, and 62% of cohort U have scored at least a 65 on a science Regents exam.	During our transition to the new, more rigorous, Common Core-based curriculum and exam, we anticipated that many students would need more than a single year to pass the exam. We are continuing to work with this cohort and expect the passing rate to increase. We hope to be at the 75% target by June 2017.
Academic Goal 12	Each year, 75% of each cohort who have been in high school for at least 3 years will have scored at least 65 on a New York State Regents examinations in History (Global Studies or U.S. History).	NYS Social Studies Regents Exams	Goal met: 94% of cohort R and 100% of cohort S have scored at least a 65 on a history Regents exam.	
Academic Goal 13	Each year, at least 75% of each student cohort (as defined by NYSED) graduates within five years.	Cohort Graduation Rate	Goal met: 100% of students in cohort R have graduated. We did not have a cohort Q.	
	Throughout the next charter term, it will achieve a B			

Academic Goal 14	grade or better in the college readiness index measure on the NYC DOE Progress Report.	NYC DOE Progress Reports	N/A: The DOE no longer produces graded Progress Reports	
Academic Goal 15	Throughout the next charter term, 80% of students enrolled in classes designed towards college accreditation will receive earn the minimum amount of college credits.	College credit accumulation	Goal met: Students enrolled in classes designed towards college accreditation earned at least the minimum amount of college credits in 86% of classes taken.	
Academic Goal 16	Each year, the percent of students in grades 3-8 performing at or above Level 3 on the State ELA exam in each tested grade will, in the majority of grades, exceed the average performance of students tested in the same grades of the Community School District in which the school is located. This will be measured by an analysis of performance compared to CSDs conducted by NYC DOE.	NYS ELA Exam	N/A: The DOE calculations are not yet available.	

3. Do have more academic goals to add?

Yes

2015-16 Progress Toward Attainment of Academic Goals

Academic Student Performance Goal	Measure Used to Evaluate Progress Toward Attainment	Goal - Met, Partially Met, or Not Met	If Not Met, Describe Efforts School Will Take
-----------------------------------	---	---------------------------------------	---

		of Goal		
Academic Goal 17	Each year, the percent of students in grades 3-8 performing at or above Level 3 on the State Math exam in each tested grade will, in the majority of grades, exceed the average performance of students tested in the same grades of the Community School District in which the school is located. This will be measured by an analysis of performance compared to CSDs conducted by NYCDOE	NYS Math Exam	N/A: The DOE calculations are not yet available.	
Academic Goal 18	Each year, the percent of students in the high school accountability cohort passing an English Regents exam with a score of 65 or above by the end of their fourth year will exceed that of the students in the high school accountability cohort from a group of similar schools as determined by the NYC DOE Progress Report peer schools	NYS English Regents Exam scores	N/A: The DOE calculations are not yet available.	
	Each year, the percent of students in the high school accountability cohort passing a Math Regents exam with a score of 65			

Academic Goal 19	or above by the end of their fourth year will exceed that of the students in the high school accountability cohort from a group of similar schools as determined by the NYC DOE Progress Report peer schools.	NYS Math Regents Exam scores	N/A: The DOE calculations are not yet available.	
Academic Goal 20	Each year, the percent of students performing at or above Level 3 on the State ELA exam in each tested grade will, in the majority of grades, exceed the performance of Black and Latino students in New York City	NYS ELA Exam scores	<p>Goal met: Academy students had higher pass rates than Black and Latino students in 5 of 6 tested grades.</p> <p>The pass rates for each tested grade are as follows: 3rd grade: PA, 61%; Black, 30%; Latino, 29% 4th grade: PA, 55%; Black, 30%; Latino, 31% 5th grade: PA, 27%; Black, 24%; Latino, 24% 6th grade: PA, 29%; Black, 23%; Latino, 23% 7th grade: PA, 21%; Black, 24%; Latino, 25% 8th grade: PA, 36%; Black, 29%; Latino, 31%</p>	
	Each year, the percent of students performing at or above Level 3 on		<p>Goal met: Promise Academy I students had higher pass rates than Black and Latino students in 6 of 6 tested grades.</p> <p>The pass rates for each tested grade are as follows: 3rd grade: PA, 79%; Black, 25%; Latino,</p>	

Academic Goal 21	the State Math exam in each tested grade will, in the majority of grades, exceed the performance of Black and Latino students in New York City	NYS Math Exam scores	29% 4th grade: PA, 76%; Black, 25%; Latino, 29% 5th grade: PA, 54%; Black, 20%; Latino, 25% 6th grade: PA, 47%; Black, 20%; Latino, 24% 7th grade: PA, 31%; Black, 16%; Latino, 21% 8th grade: PA, 41%; Black, 13%; Latino, 16%	
Academic Goal 22	Each year, the School will have an annual average student attendance rate of at least 95% as calculated by ATS	ATS average daily attendance	Goal Met: average attendance was 95%	
Academic Goal 23	Each year, 95% of all students enrolled on the last day of the school year who do not move out of district will return the following September	ATS Enrollment and Discharge Records	Goal met: 95% (964/1018) of students enrolled on the last day of school who did not move away returned this fall.	
Academic Goal 24				
Academic Goal 25				
Academic Goal 26				
Academic Goal 27				
Academic Goal 28				
Academic Goal 29				
Academic Goal 30				

4. ORGANIZATIONAL GOALS

2015-16 Progress Toward Attainment of Organizational Goals

	Organizational Goal	Measure Used to Evaluate Progress	Goal - Met, Partially Met, or Not Met	If Not Met, Describe Efforts School Will Take
Org Goal 1	Each year, the school will comply with all applicable laws, rules, regulations and contract terms including, but not limited to, the New York Charter Schools Act, the New York Freedom of Information Law, the New York Open Meetings Law, the federal Individuals with Disabilities Education Act, and federal Family Educational Rights and Privacy Act.	Reporting submissions to the DOE and NYSED, Board minutes, ATS and internal systems.	Goal met.	
Org Goal 2	Per the 2010 amendment to the Charter Schools Act, the school shall demonstrate good faith efforts to attract, retain, and meet or exceeded enrollment and retention targets as prescribed by the Board of Regents through the State Education of students with disabilities, English language learners , and students who are eligible applicants for the free and reduced price lunch program	ATS	Goal partially met.	Refer to Appendix H: Enrollment & Retention section for more details
	As reflected in the Board minutes, the			

Org Goal 3	Superintendent or Principals will present Program reports that outline enrollment, attendance, discharge status, IEP, and ELL numbers as well as any available testing results at every Board of Trustees meeting. The Superintendent or Chief Financial Officer will present an up-to-date Financial Report as well.	Board Meeting Minutes	Goal Met.	
Org Goal 4				
Org Goal 5				

5. Do you have more organizational goals to add?

No

6. FINANCIAL GOALS

2015-16 Progress Toward Attainment of Financial Goals

	Financial Goals	Measure Used to Evaluate Progress	Goal - Met, Partially Met, or Not Met	If Not Met, Describe Efforts School Will Take
Financial Goal 1	Each year, student enrollment will be within 15% of full enrollment as defined in the school's contract. This will be measured each year by an analysis of student enrollment figures in ATS.	Enrollment Data	Goal met: Enrollment at 94% of full enrollment (1106/1175)	
	Upon completion of			

Financial Goal 2	the each school year the school will undergo an independent financial audit that will result in an unqualified opinion and no major findings .	Financial Data	Goal met.	
Financial Goal 3	Each year, the school will operate on a balanced budget and maintain a stable cash flow.	Financial Data	Goal met.	
Financial Goal 4				
Financial Goal 5				



Entry 4 Expenditures per Child

Created: 07/08/2016

Last updated: 07/29/2016

Page 1

Financial Information

This information is required of ALL charter schools. Provide the following measures of fiscal performance of the charter school in Appendix B (Total Expenditures and Administrative Expenditures Per Child):

1. Total Expenditures Per Child

To calculate **'Total Expenditures per Child'** take total expenditures (from the unaudited 2015-16 Schedule of Functional Expenses) and divide by the year end FTE student enrollment. (Integers Only. No dollar signs or commas).

Note: *The information on the Schedule of Functional Expenses on pages 41-43 of the Audit Guide can help schools locate the amounts to use in the two per pupil calculations:* <http://www.p12.nysed.gov/psc/AuditGuide.html>

Line 1: Total Expenditures	23063460
Line 2: Year End FTE student enrollment	1106
Line 3: Divide Line 1 by Line 2	20850

2. Administrative Expenditures per Child

To calculate **'Administrative Expenditures per Child'** To calculate "Administrative Expenditures per Child" first *add* together the following:

1. Take the relevant portion from the 'personnel services cost' row and the 'management and general' column (from the unaudited 2015-16 Schedule of Functional Expenses)
2. Any contracted administrative/management fee paid to other organizations or corporations
3. Take the total from above and divide it by the year-end FTE enrollment. The relevant portion that

must be included in this calculation is defined as follows:

Administrative Expenditures: Administration and management of the charter school includes the activities and personnel of the offices of the chief school officer, the finance or business offices, school operations personnel, data management and reporting, human resources, technology, etc. It also includes those administrative and management services provided by other organizations or corporations on behalf of the charter school for which the charter school pays a fee or other compensation. Do not include the FTE of personnel whose role is to directly support the instructional program.

Notes:

The information on the Schedule of Functional Expenses on pages 41-43 of the Audit Guide can help schools locate the amounts to use in the two per pupil calculations:

<http://www.p12.nysed.gov/psc/AuditGuide.html>.

Employee benefit costs or expenditures should not be reported in the above calculations.

Line 1: Relevant Personnel Services Cost (Row)	862442
Line 2: Management and General Cost (Column)	219221
Line 3: Sum of Line 1 and Line 2	1081663
Line 5: Divide Line 3 by the Year End FTE student enrollment	978

Thank you.



Entry 6a Audited Statements

Created: 07/11/2016

Last updated: 11/01/2016

Regents, NYCDOE and Buffalo BOE authorized schools should enter the financial contact information requested and upload the independent auditor's report and internal controls reports as one combined file.

Page 1

School Based Fiscal Contact Information

	School Based Fiscal Contact Name	School Based Fiscal Contact Email	School Based Fiscal Contact Phone
	Alpha Conteh	aconteh@hcz.org	212-360-3255

Audit Firm Contact Information

	School Audit Contact Name	School Audit Contact Email	School Audit Contact Phone	Years Working With This Audit Firm
	Grant Thornton - Mike Ryan	michael.d.ryan@us.gt.com	212-542-9536	7

If Applicable:

	Outsourced Financial Services Firm Name	Outsourced Financial Services Contact	Outsourced Financial Services Email	Outsourced Financial Services Phone	Years Working With This Firm

Please upload as one combined file:

- a. the independent auditor's report on financial statements and notes; and**
- b. reports on internal controls over financial reporting and compliance**

<https://nysed-cso-reports.fluidreview.com/media/assets/survey-uploads/84001/6212257-F7wWrRhhE3/PAI%2084m284%20Financial%20Statements.pdf>



Entry 6b Additional Financial Docs

Created: 07/08/2016

Last updated: 11/01/2016

The additional items listed below should be uploaded if applicable. Please explain the reason(s) if the items are not included. Examples might include: a written management letter was not issued; the school did not expend federal funds in excess of the Single Audit Threshold of \$750,000; the corrective action plan will be submitted by the following date (should be no later than 30 days from the submission of the report); etc.

Page 1

1. Management Letter

(No response)

Explanation for not uploading the Management Letter.

Not applicable due to no internal control matters that meet the reporting requirement.

2. Form 990

(No response)

Explanation for not uploading the Form 990.

Six-month extension has been granted.

3. Federal Single Audit

Note: A copy of the Federal Single Audit must be filed with the Federal Audit Clearinghouse. Please refer to OMB Uniform Guidelines for the federal filing requirements.

(No response)

Explanation for not uploading the Federal Single Audit.

We will file within 9-month after the end of our fiscal year.

4. CSP Agreed Upon Procedure Report

(No response)

Explanation for not uploading the procedure report.

Not applicable.

5. Evidence of Required Escrow Account

https://nysed-cso-reports.fluidreview.com/media/assets/survey-uploads/84010/6206263-pN6H0Nalce/PAI_Escrow_Agreement_30Sep16.pdf

Explanation for not uploading the Escrow evidence.

(No response)

6. Corrective Action Plan

A **Corrective Action Plan** for Audit Findings and Management Letter Recommendations, which must include:

- a. The person responsible
- b. The date action was taken, or will be taken
- c. Description of the action taken
- d. Evidence of implementation (if available)

(No response)

Explanation for not uploading the Corrective Action Plan.

Not applicable due to no internal control matters that meet the reporting requirement.



JPMorgan Chase Bank, N.A.
 P O Box 659754
 San Antonio, TX 78265 - 9754

July 30, 2016 through August 31, 2016
 Account Number: **000002922761222**

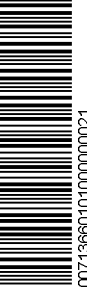
CUSTOMER SERVICE INFORMATION

Web site: **www.Chase.com**
 Service Center: **1-877-425-8100**
 Deaf and Hard of Hearing: 1-800-242-7383
 Para Espanol: 1-888-622-4273
 International Calls: 1-713-262-1679



00071366 DRE 802 210 24516 NNNNNNNNNNN 1 000000000 66 0000

HCZ PROMISE ACADEMY I
 CHARTER SCHOOL-ESCROW A/C
 35 E 125TH ST
 NEW YORK NY 10035-1816



00713660101000000021

SAVINGS SUMMARY

Chase Business Select High Yield Savings

	INSTANCES	AMOUNT
Beginning Balance		\$70,688.14
Deposits and Additions	1	3.17
Ending Balance	1	\$70,691.31
Annual Percentage Yield Earned This Period		0.05%
Interest Paid This Period		\$3.17
Interest Paid Year-to-Date		\$23.46

Your monthly service fee was waived because you maintained an average savings balance of \$10,000 or more during the statement period.

TRANSACTION DETAIL

DATE	DESCRIPTION	AMOUNT	BALANCE
	Beginning Balance		\$70,688.14
08/31	Interest Payment	3.17	70,691.31
	Ending Balance		\$70,691.31

You earned a higher interest rate on your Chase Business Select High Yield Savings account during this statement period because you had a qualifying Chase Performance Business Checking account.

30 deposited items are provided with your account each month. There is a \$0.20 fee for each additional deposited item.



July 30, 2016 through August 31, 2016
Account Number: **000002922761222**

IN CASE OF ERRORS OR QUESTIONS ABOUT YOUR ELECTRONIC FUNDS TRANSFERS: Call or write us at the phone number or address on the front of this statement (non-personal accounts contact Customer Service) if you think your statement or receipt is incorrect or if you need more information about a transfer listed on the statement or receipt. We must hear from you no later than 60 days after we sent you the FIRST statement on which the problem or error appeared. Be prepared to give us the following information:

- Your name and account number
- The dollar amount of the suspected error
- A description of the error or transfer you are unsure of, why you believe it is an error, or why you need more information.

We will investigate your complaint and will correct any error promptly. If we take more than 10 business days (or 20 business days for new accounts) to do this, we will credit your account for the amount you think is in error so that you will have use of the money during the time it takes us to complete our investigation .

IN CASE OF ERRORS OR QUESTIONS ABOUT NON-ELECTRONIC TRANSACTIONS: Contact the bank immediately if your statement is incorrect or if you need more information about any non-electronic transactions (checks or deposits) on this statement. If any such error appears, you must notify the bank in writing no later than 30 days after the statement was made available to you. For more complete details, see the Account Rules and Regulations or other applicable account agreement that governs your account.



JPMorgan Chase Bank, N.A. Member FDIC

New York State Education Department

Request for Proposals to Establish Charter Schools Authorized by the Board of Regents

2015-16 Budget & Cash Flow Template

General Instructions and Notes for New Application Budgets and Cash Flows Templates

1	Complete ALL SIX columns in BLUE
2	Enter information into the GRAY cells
3	Cells containing RED triangles in the upper right corner in columns B through G contain guidance on that particular item
4	Funding by School District information for all NYS School district is located on the State Aid website at https://stateaid.nysed.gov/charter/ . Refer to this website for per-pupil tuition funding for all school districts. Rows may be inserted in the worksheet to accomodate additional districts if necessary.
5	The Assumptions column should be completed for all revenue and expense items unless the item is self-explanatory. Where applicable, please reference the page number or section in the application narrative that indicates the assumption being made. For instance, student enrollment would reference the applicable page number in Section I, C of the application narrative.

Harlem Children's Zone Promise Academy Charter School

PROJECTED BUDGET FOR 2016-2017

PROJECTED BUDGET FOR 2016-2017							Assumptions
July 1, 2016 to June 30, 2017							DESCRIPTION OF ASSUMPTIONS - Please note assumptions when applicable
Please Note: The student enrollment data is entered below in the Enrollment Section beginning in row 155. This will populate the data in row 10.							
	REGULAR EDUCATION	SPECIAL EDUCATION	OTHER	FUNDRAISING	MANAGEMENT & GENERAL	TOTAL	
Total Revenue	19,951,716	-	-	-	-	19,951,716	
Total Expenses	19,951,716	-	-	-	-	19,951,716	
Net Income	0	-	-	-	-	0	
Actual Student Enrollment	-	-	-	-	-	-	
Total Paid Student Enrollment	-	-	-	-	-	-	
	REGULAR EDUCATION	SPECIAL EDUCATION	OTHER	FUNDRAISING	MANAGEMENT & GENERAL	TOTAL	
REVENUE							
REVENUES FROM STATE SOURCES							
Per Pupil Revenue	CY Per Pupil Rate						
District of Location	\$13,777.00	15,555,943	-	-	-	15,555,943	
MT. Vernon	\$17,044.00	102,864	-	-	-	102,864	
Yonkers	\$14,523.00	-	-	-	-	-	
Greenburgh	\$22,343.00	-	-	-	-	-	
School District 5 (Enter Name)		-	-	-	-	-	
		15,658,807	-	-	-	15,658,807	
Special Education Revenue		1,257,190	-	-	-	1,257,190	
Grants							
Stimulus		-	-	-	-	-	
Other		-	-	-	-	-	
Other State Revenue		-	-	-	-	-	
TOTAL REVENUE FROM STATE SOURCES		16,915,997	-	-	-	16,915,997	
REVENUE FROM FEDERAL FUNDING							
IDEA Special Needs		209,791	-	-	-	209,791	
Title I		412,032	-	-	-	412,032	
Title Funding - Other		35,665	-	-	-	35,665	
School Food Service (Free Lunch)		731,757	-	-	-	731,757	
Grants							
Charter School Program (CSP) Planning & Implementation		-	-	-	-	-	
Other		479,450	-	-	-	479,450	
Other Federal Revenue		-	-	-	-	-	
TOTAL REVENUE FROM FEDERAL SOURCES		1,868,695	-	-	-	1,868,695	
LOCAL and OTHER REVENUE							
Contributions and Donations, Fundraising		1,159,659	-	-	-	1,159,659	
Erate Reimbursement		7,365	-	-	-	7,365	
Interest Income, Earnings on Investments,		-	-	-	-	-	
NYC-DYCD (Department of Youth and Community Developmt.)		-	-	-	-	-	
Food Service (Income from meals)		-	-	-	-	-	
Text Book		-	-	-	-	-	
Other Local Revenue		-	-	-	-	-	
TOTAL REVENUE FROM LOCAL and OTHER SOURCES		1,167,024	-	-	-	1,167,024	
TOTAL REVENUE		19,951,716	-	-	-	19,951,716	
EXPENSES							
ADMINISTRATIVE STAFF PERSONNEL COSTS	No. of Positions						List exact titles and staff FTE's (Full time equiivalent)
Executive Management	5.00	350,042	-	-	-	350,042	
Instructional Management	12.00	613,584	-	-	-	613,584	
Deans, Directors & Coordinators	24.00	1,489,229	-	-	-	1,489,229	
CFO / Director of Finance	-	-	-	-	-	-	
Operation / Business Manager	8.00	311,480	-	-	-	311,480	
Administrative Staff	9.00	355,854	-	-	-	355,854	
TOTAL ADMINISTRATIVE STAFF	58	3,120,190	-	-	-	3,120,190	
INSTRUCTIONAL PERSONNEL COSTS							
Teachers - Regular	79.00	5,080,653	-	-	-	5,080,653	
Teachers - SPED	13.00	823,677	-	-	-	823,677	
Substitute Teachers	-	-	-	-	-	-	
Teaching Assistants	21.00	555,938	-	-	-	555,938	
Specialty Teachers	41.00	1,834,735	-	-	-	1,834,735	

Harlem Children's Zone Promise Academy Charter School

PROJECTED BUDGET FOR 2016-2017

PROJECTED BUDGET FOR 2016-2017							Assumptions
July 1, 2016 to June 30, 2017							DESCRIPTION OF ASSUMPTIONS - Please note assumptions when applicable
Please Note: The student enrollment data is entered below in the Enrollment Section beginning in row 155. This will populate the data in row 10.							
		REGULAR EDUCATION	SPECIAL EDUCATION	OTHER	FUNDRAISING	MANAGEMENT & GENERAL	TOTAL
Total Revenue		19,951,716	-	-	-	-	19,951,716
Total Expenses		19,951,716	-	-	-	-	19,951,716
Net Income		0	-	-	-	-	0
Actual Student Enrollment		-	-	-	-	-	-
Total Paid Student Enrollment		-	-	-	-	-	-
		PROGRAM SERVICES			SUPPORT SERVICES		
		REGULAR EDUCATION	SPECIAL EDUCATION	OTHER	FUNDRAISING	MANAGEMENT & GENERAL	TOTAL
Aides	-	-	-	-	-	-	-
Therapists & Counselors	10.00	503,167	-	-	-	-	503,167
Other	-	270,483	-	-	-	-	270,483
TOTAL INSTRUCTIONAL	164	9,068,653	-	-	-	-	9,068,653
NON-INSTRUCTIONAL PERSONNEL COSTS							
Nurse	-	-	-	-	-	-	-
Librarian	-	-	-	-	-	-	-
Custodian	-	-	-	-	-	-	-
Security	-	-	-	-	-	-	-
Other	-	-	-	-	-	-	-
TOTAL NON-INSTRUCTIONAL	-	-	-	-	-	-	-
SUBTOTAL PERSONNEL SERVICE COSTS	222	12,188,843	-	-	-	-	12,188,843
PAYROLL TAXES AND BENEFITS							
Payroll Taxes		1,323,565	-	-	-	-	1,323,565
Fringe / Employee Benefits		3,019,714	-	-	-	-	3,019,714
Retirement / Pension		-	-	-	-	-	-
TOTAL PAYROLL TAXES AND BENEFITS		4,343,279	-	-	-	-	4,343,279
TOTAL PERSONNEL SERVICE COSTS		16,532,122	-	-	-	-	16,532,122
CONTRACTED SERVICES							
Accounting / Audit		72,100	-	-	-	-	72,100
Legal		-	-	-	-	-	-
Management Company Fee		-	-	-	-	-	-
Nurse Services		-	-	-	-	-	-
Food Service / School Lunch		-	-	-	-	-	-
Payroll Services		17,629	-	-	-	-	17,629
Special Ed Services		-	-	-	-	-	-
Titlement Services (i.e. Title I)		-	-	-	-	-	-
Other Purchased / Professional / Consulting		468,108	-	-	-	-	468,108
TOTAL CONTRACTED SERVICES		557,837	-	-	-	-	557,837
SCHOOL OPERATIONS							
Board Expenses		-	-	-	-	-	-
Classroom / Teaching Supplies & Materials		9,870	-	-	-	-	9,870
Special Ed Supplies & Materials		-	-	-	-	-	-
Textbooks / Workbooks		-	-	-	-	-	-
Supplies & Materials other		306,443	-	-	-	-	306,443
Equipment / Furniture		82,665	-	-	-	-	82,665
Telephone		-	-	-	-	-	-
Technology		161,760	-	-	-	-	161,760
Student Testing & Assessment		-	-	-	-	-	-
Field Trips		71,836	-	-	-	-	71,836
Transportation (student)		216,400	-	-	-	-	216,400
Student Services - other		557,389	-	-	-	-	557,389
Office Expense		-	-	-	-	-	-
Staff Development		117,240	-	-	-	-	117,240
Staff Recruitment		-	-	-	-	-	-
Student Recruitment / Marketing		-	-	-	-	-	-
School Meals / Lunch		914,000	-	-	-	-	914,000
Travel (Staff)		41,375	-	-	-	-	41,375
Fundraising		-	-	-	-	-	-
Other		72,092	-	-	-	-	72,092
TOTAL SCHOOL OPERATIONS		2,551,070	-	-	-	-	2,551,070

Harlem Children's Zone Promise Academy Charter School

PROJECTED BUDGET FOR 2016-2017

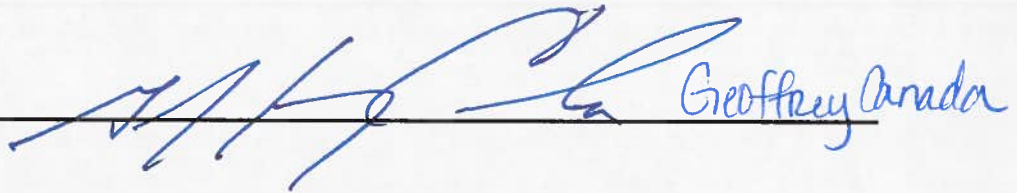
PROJECTED BUDGET FOR 2016-2017							Assumptions
July 1, 2016 to June 30, 2017							DESCRIPTION OF ASSUMPTIONS - Please note assumptions when applicable
Please Note: The student enrollment data is entered below in the Enrollment Section beginning in row 155. This will populate the data in row 10.							
	REGULAR EDUCATION	SPECIAL EDUCATION	OTHER	FUNDRAISING	MANAGEMENT & GENERAL	TOTAL	
Total Revenue	19,951,716	-	-	-	-	19,951,716	
Total Expenses	19,951,716	-	-	-	-	19,951,716	
Net Income	0	-	-	-	-	0	
Actual Student Enrollment	-	-	-	-	-	-	
Total Paid Student Enrollment	-	-	-	-	-	-	
	PROGRAM SERVICES			SUPPORT SERVICES			
	REGULAR EDUCATION	SPECIAL EDUCATION	OTHER	FUNDRAISING	MANAGEMENT & GENERAL	TOTAL	
FACILITY OPERATION & MAINTENANCE							
Insurance	82,709	-	-	-	-	82,709	
Janitorial	-	-	-	-	-	-	
Building and Land Rent / Lease	28,368	-	-	-	-	28,368	
Repairs & Maintenance	14,961	-	-	-	-	14,961	
Equipment / Furniture	-	-	-	-	-	-	
Security	-	-	-	-	-	-	
Utilities	184,649	-	-	-	-	184,649	
TOTAL FACILITY OPERATION & MAINTENANCE	310,687	-	-	-	-	310,687	
DEPRECIATION & AMORTIZATION	-	-	-	-	-	-	
DISSOLUTION ESCROW & RESERVES / CONTIGENCY	-	-	-	-	-	-	
TOTAL EXPENSES	19,951,716	-	-	-	-	19,951,716	
NET INCOME	0	-	-	-	-	0	
	REGULAR EDUCATION	SPECIAL EDUCATION	TOTAL ENROLLED				
ENROLLMENT - *School Districts Are Linked To Above Entries*							
District of Location							
MT. Vernon	6		6				
Yonkers	2		2				
Greenburgh	1		1				
School District 5 (Enter Name)							
TOTAL ENROLLMENT	9	-	9				
REVENUE PER PUPIL	2,216,857	-	-				
EXPENSES PER PUPIL	2,216,857	-	-				

Home Address: 83 Fletcher Avenue Valley Stream, NY 11580 _____

Disclosure of Financial Interest by a Current or Proposed Charter School Education Corporation Trustee

Trustee Name:

Geoffrey Canada



Name of Charter School Education Corporation (for an unmerged school, this is the Charter School Name):

Harlem Children's Zone Promise Academy I Charter School _____

1. List all positions held on the education corporation board (e.g., president, treasurer, parent representative).

President

2. Is the trustee an employee of any school operated by the Education Corporation?
 Yes No

If Yes, for each school, please provide a description of the position(s) you hold, your responsibilities, your salary and your start date.

3. Is the trustee an employee or agent of the management company or institutional partner of the charter school(s) governed by the Education Corporation?

Yes No

If Yes, for each school, please provide a description of the position(s) you hold, your responsibilities, your salary and your start date.

Position: President of the Harlem Children's Zone, a non-profit institutional partner of Promise Academy I Charter School.

Salary: \$125,000

Start date: 7/1/2014

4. Identify each interest/transaction (and provide the requested information) that you or any of your immediate family members or any persons who live with you in your house have held or engaged in with the charter school(s) governed by the Education Corporation during the time you have served on the board, and in the six-month period prior to such service. If there has been no such financial interest or transaction, write None. Please note that if you answered Yes to Questions 2-4 above, you need not disclose again your employment status, salary, etc.

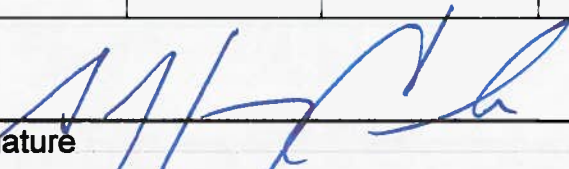
Date(s)	Nature of Financial Interest/Transaction	Steps taken to avoid a conflict of interest, (e.g., did not vote, did not participate in discussion)	Name of person holding interest or engaging in transaction and relationship to yourself
None	None	None	None

Please write "None" if applicable. Do not leave this space blank.

5. Identify each individual, business, corporation, union association, firm, partnership, committee proprietorship, franchise holding company, joint stock company, business or real estate trust, non-profit organization, or other organization or group of people doing business with the school(s) governed by the Education Corporation and in which such entity, during the time of your tenure as a trustee, you and/or your immediate family member(s) or person(s) living in your house had a financial interest or other relationship. If you are a member, director, officer or employee of an organization formally partnered with the school(s) that is/are doing business with the school(s) through a management or services agreement, please identify only the name of the organization, your position in the organization, and the relationship between such organization and the school(s). If there was no financial interest, write None.

Organization conducting business with the school(s)	Nature of business conducted	Approximate value of the business conducted	Name of Trustee and/or immediate family member of household holding an interest in the organization conducting business with the school(s) and the nature of the interest	Steps Taken to Avoid Conflict of Interest
None	None	None	None	None

Please write "None" if applicable. Do not leave this space blank.

Signature 

Date 7/29/16

Please note that this document is considered a public record and as such, may be made available to members of the public upon request under the Freedom of Information Law. Personal contact information provided below will be redacted.

Business Telephone: 212-360-3255 _____

Business Address: HCZ, 35 East 125th Street, New York, NY 10035 _____

E-mail Address: tfountain@hcz.org _____

Home Telephone: 212-360-3255 _____

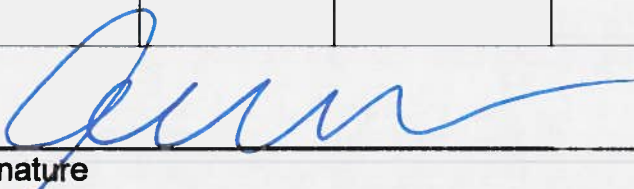
Date(s)	Nature of Financial Interest/Transaction	Steps taken to avoid a conflict of interest, (e.g., did not vote, did not participate in discussion)	Name of person holding interest or engaging in transaction and relationship to yourself
None	None	None	None

Please write "None" if applicable. Do not leave this space blank.

5. Identify each individual, business, corporation, union association, firm, partnership, committee proprietorship, franchise holding company, joint stock company, business or real estate trust, non-profit organization, or other organization or group of people doing business with the school(s) governed by the Education Corporation **and** in which such entity, during the time of your tenure as a trustee, you and/or your immediate family member(s) or person(s) living in your house had a financial interest or other relationship. If you are a member, director, officer or employee of an organization formally partnered with the school(s) that is/are doing business with the school(s) through a management or services agreement, please identify only the name of the organization, your position in the organization, and the relationship between such organization and the school(s). If there was no financial interest, write **None**.

Organization conducting business with the school(s)	Nature of business conducted	Approximate value of the business conducted	Name of Trustee and/or immediate family member of household holding an interest in the organization conducting business with the school(s) and the nature of the interest	Steps Taken to Avoid Conflict of Interest
None	None	None	None	None

Please write "None" if applicable. Do not leave this space blank.


Date 2/1/16

Please note that this document is considered a public record and as such, may be made available to members of the public upon request under the Freedom of Information Law. Personal contact information provided below will be redacted.

Business Telephone: 212-360-3255 _____

Business Address: HCZ, 35 East 125th Street, New York, NY 10035 _____

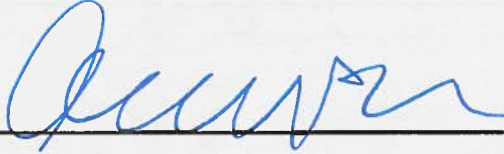
E-mail Address: tfountain@hcz.org _____

Home Telephone: 212-360-3255 _____

**Disclosure of Financial Interest by a Current or Proposed Charter School
Education Corporation Trustee**

Trustee Name:

Anne Williams-Isom

 Anne Williams-Isom

Name of Charter School Education Corporation (for an unmerged school, this is the Charter School Name):

Harlem Children's Zone Promise Academy I Charter School _____

1. List all positions held on the education corporation board (e.g., president, treasurer, parent representative).

Chief Executive Officer

2. Is the trustee an employee of any school operated by the Education Corporation?
 Yes No

If **Yes**, for each school, please provide a description of the position(s) you hold, your responsibilities, your salary and your start date.

3. Is the trustee an employee or agent of the management company or institutional partner of the charter school(s) governed by the Education Corporation?

Yes No

If **Yes**, for each school, please provide a description of the position(s) you hold, your responsibilities, your salary and your start date.

Position: Chief Executive Officer of the Harlem Children's Zone, a non-profit institutional partner of Promise Academy I Charter School.

Salary: \$280,000

Start date: 7/1/2014

4. Identify each interest/transaction (and provide the requested information) that you or any of your immediate family members or any persons who live with you in your house have held or engaged in with the charter school(s) governed by the Education Corporation during the time you have served on the board, and in the six-month period prior to such service. If there has been no such financial interest or transaction, write **None**. Please note that if you answered **Yes** to Questions 2-4 above, you need not disclose again your employment status, salary, etc.

Home Address: 249 West 139th Street New York, NY 10030 _____

None	None	None	None
------	------	------	------

Please write "None" if applicable. Do not leave this space blank.

5. Identify each individual, business, corporation, union association, firm, partnership, committee proprietorship, franchise holding company, joint stock company, business or real estate trust, non-profit organization, or other organization or group of people doing business with the school(s) governed by the Education Corporation **and** in which such entity, during the time of your tenure as a trustee, you and/or your immediate family member(s) or person(s) living in your house had a financial interest or other relationship. If you are a member, director, officer or employee of an organization formally partnered with the school(s) that is/are doing business with the school(s) through a management or services agreement, please identify only the name of the organization, your position in the organization, and the relationship between such organization and the school(s). If there was no financial interest, write None.

Organization conducting business with the school(s)	Nature of business conducted	Approximate value of the business conducted	Name of Trustee and/or immediate family member of household holding an interest in the organization conducting business with the school(s) and the nature of the interest	Steps Taken to Avoid Conflict of Interest
None	None	None	None	None

Please write "None" if applicable. Do not leave this space blank.

Willie M. Lewis 2/19/2016
 Signature Date

Please note that this document is considered a public record and as such, may be made available to members of the public upon request under the Freedom of Information Law. Personal contact information provided below will be redacted.

Business Telephone: 646-596-1922 _____

Business Address: N/A _____

E-mail Address: wmaelewis@yahoo.com _____

Home Telephone: 646-596-1922 _____

Home Address: 230 West 131st Street New York, NY 10027 _____

Disclosure of Financial Interest by a Current or Proposed Charter School Education Corporation Trustee

Trustee Name:

Willie Mae Lewis _____

Name of Charter School Education Corporation (for an unmerged school, this is the Charter School Name):

Harlem Children's Zone Promise Academy I Charter School _____

1. List all positions held on the education corporation board (e.g., president, treasurer, parent representative).

Member

2. Is the trustee an employee of any school operated by the Education Corporation?
 Yes No

If **Yes**, for each school, please provide a description of the position(s) you hold, your responsibilities, your salary and your start date.

3. Is the trustee an employee or agent of the management company or institutional partner of the charter school(s) governed by the Education Corporation?

Yes No

If **Yes**, for each school, please provide a description of the position(s) you hold, your responsibilities, your salary and your start date.

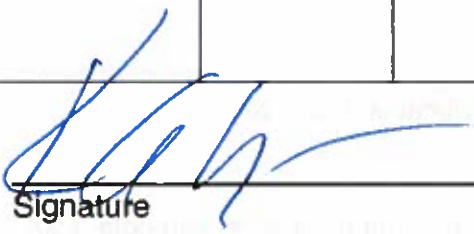
4. Identify each interest/transaction (and provide the requested information) that you or any of your immediate family members or any persons who live with you in your house have held or engaged in with the charter school(s) governed by the Education Corporation during the time you have served on the board, and in the six-month period prior to such service. If there has been no such financial interest or transaction, write **None**. Please note that if you answered **Yes** to Questions 2-4 above, you need not disclose again your employment status, salary, etc.

Date(s)	Nature of Financial Interest/Transaction	Steps taken to avoid a conflict of interest, (e.g., did not vote, did not participate in discussion)	Name of person holding interest or engaging in transaction and relationship to yourself

--	--	--	--

5. Identify each individual, business, corporation, union association, firm, partnership, committee proprietorship, franchise holding company, joint stock company, business or real estate trust, non-profit organization, or other organization or group of people doing business with the school(s) governed by the Education Corporation and in which such entity, during the time of your tenure as a trustee, you and/or your immediate family member(s) or person(s) living in your house had a financial interest or other relationship. If you are a member, director, officer or employee of an organization formally partnered with the school(s) that is/are doing business with the school(s) through a management or services agreement, please identify only the name of the organization, your position in the organization, and the relationship between such organization and the school(s). If there was no financial interest, write None.

Organization conducting business with the school(s)	Nature of business conducted	Approximate value of the business conducted	Name of Trustee and/or immediate family member of household holding an interest in the organization conducting business with the school(s) and the nature of the interest	Steps Taken to Avoid Conflict of Interest
None	None	None	None	None
<i>Please write "None" if applicable. Do not leave this space blank.</i>				



Signature

7/19/16
Date

Please note that this document is considered a public record and as such, may be made available to members of the public upon request under the Freedom of Information Law. Personal contact information provided below will be redacted.

Business Telephone: 212-421-2500 _____

Business Address: Invemed Associates Inc. 375 Park Avenue, New York, NY 10152 _

E-mail Address: pam@invemed.com _____

Home Telephone: 212-421-2500 _____

Home Address: 920 Fifth Avenue New York, NY 10021 _____

Disclosure of Financial Interest by a Current or Proposed Charter School Education Corporation Trustee

Trustee Name:

Kenneth Langone _____

Name of Charter School Education Corporation (for an unmerged school, this is the Charter School Name):

Harlem Children's Zone Promise Academy I Charter School _____

1. List all positions held on the education corporation board (e.g., president, treasurer, parent representative).

Chairman Emeritus

2. Is the trustee an employee of any school operated by the Education Corporation?
 Yes No

If **Yes**, for each school, please provide a description of the position(s) you hold, your responsibilities, your salary and your start date.

3. Is the trustee an employee or agent of the management company or institutional partner of the charter school(s) governed by the Education Corporation?
 Yes No

If **Yes**, for each school, please provide a description of the position(s) you hold, your responsibilities, your salary and your start date.

4. Identify each interest/transaction (and provide the requested information) that you or any of your immediate family members or any persons who live with you in your house have held or engaged in with the charter school(s) governed by the Education Corporation during the time you have served on the board, and in the six-month period prior to such service. If there has been no such financial interest or transaction, write **None**. Please note that if you answered **Yes** to Questions 2-4 above, you need not disclose again your employment status, salary, etc.

Date(s)	Nature of Financial Interest/Transaction	Steps taken to avoid a conflict of interest, (e.g., did not vote, did not participate in discussion)	Name of person holding interest or engaging in transaction and relationship to yourself
None	None	None	None

Please write "None" if applicable. Do not leave this space blank.

None	None	None	None
------	------	------	------

Please write "None" if applicable. Do not leave this space blank.

5. Identify each individual, business, corporation, union association, firm, partnership, committee proprietorship, franchise holding company, joint stock company, business or real estate trust, non-profit organization, or other organization or group of people doing business with the school(s) governed by the Education Corporation and in which such entity, during the time of your tenure as a trustee, you and/or your immediate family member(s) or person(s) living in your house had a financial interest or other relationship. If you are a member, director, officer or employee of an organization formally partnered with the school(s) that is/are doing business with the school(s) through a management or services agreement, please identify only the name of the organization, your position in the organization, and the relationship between such organization and the school(s). If there was no financial interest, write **None**.

Organization conducting business with the school(s)	Nature of business conducted	Approximate value of the business conducted	Name of Trustee and/or immediate family member of household holding an interest in the organization conducting business with the school(s) and the nature of the interest	Steps Taken to Avoid Conflict of Interest
None	None	None	None	None

Please write "None" if applicable. Do not leave this space blank.

 _____
 Signature 7/19/16
Date

Please note that this document is considered a public record and as such, may be made available to members of the public upon request under the Freedom of Information Law. Personal contact information provided below will be redacted.

Business Telephone: 212-830-6650 _____

Business Address: Duquesne Family Office LLC, 40 West 57th Street, 25th Floor, New York, NY 10019 _____

E-mail Address: anne@duquesne.com; kate@duquesne.com _____

Home Telephone: 212-830-6650 _____

Home Address: 117 East 72nd Street New York, NY 10021 _____

Disclosure of Financial Interest by a Current or Proposed Charter School Education Corporation Trustee

Trustee Name:

Stanley Druckenmiller _____

Name of Charter School Education Corporation (for an unmerged school, this is the Charter School Name):

Harlem Children's Zone Promise Academy I Charter School _____

1. List all positions held on the education corporation board (e.g., president, treasurer, parent representative).

Member

2. Is the trustee an employee of any school operated by the Education Corporation?
 Yes No

If **Yes**, for each school, please provide a description of the position(s) you hold, your responsibilities, your salary and your start date.

3. Is the trustee an employee or agent of the management company or institutional partner of the charter school(s) governed by the Education Corporation?

Yes No

If **Yes**, for each school, please provide a description of the position(s) you hold, your responsibilities, your salary and your start date.

4. Identify each interest/transaction (and provide the requested information) that you or any of your immediate family members or any persons who live with you in your house have held or engaged in with the charter school(s) governed by the Education Corporation during the time you have served on the board, and in the six-month period prior to such service. If there has been no such financial interest or transaction, write **None**. Please note that if you answered **Yes** to Questions 2-4 above, you need not disclose again your employment status, salary, etc.

Date(s)	Nature of Financial Interest/Transaction	Steps taken to avoid a conflict of interest, (e.g., did not vote, did not participate in discussion)	Name of person holding interest or engaging in transaction and relationship to yourself

Disclosure of Financial Interest by a Current or Proposed Charter School Education Corporation Trustee

Trustee Name:

Arlene Gibson _____

Name of Charter School Education Corporation (for an unmerged school, this is the Charter School Name):

Harlem Children's Zone Promise Academy I Charter School _____

1. List all positions held on the education corporation board (e.g., president, treasurer, parent representative).

Member

2. Is the trustee an employee of any school operated by the Education Corporation?
 Yes No

If **Yes**, for each school, please provide a description of the position(s) you hold, your responsibilities, your salary and your start date.

3. Is the trustee an employee or agent of the management company or institutional partner of the charter school(s) governed by the Education Corporation?

Yes No

If **Yes**, for each school, please provide a description of the position(s) you hold, your responsibilities, your salary and your start date.

4. Identify each interest/transaction (and provide the requested information) that you or any of your immediate family members or any persons who live with you in your house have held or engaged in with the charter school(s) governed by the Education Corporation during the time you have served on the board, and in the six-month period prior to such service. If there has been no such financial interest or transaction, write **None**. Please note that if you answered **Yes** to Questions 2-4 above, you need not disclose again your employment status, salary, etc.

Date(s)	Nature of Financial Interest/Transaction	Steps taken to avoid a conflict of interest, (e.g., did not vote, did not participate in discussion)	Name of person holding interest or engaging in transaction and relationship to yourself

Disclosure of Financial Interest by a Current or Proposed Charter School Education Corporation Trustee

Trustee Name:

Mitch Kurz _____

Name of Charter School Education Corporation (for an unmerged school, this is the Charter School Name):

Harlem Children's Zone Promise Academy I Charter School _____

1. List all positions held on the education corporation board (e.g., president, treasurer, parent representative).

Treasurer

2. Is the trustee an employee of any school operated by the Education Corporation?
 Yes No

If **Yes**, for each school, please provide a description of the position(s) you hold, your responsibilities, your salary and your start date.

3. Is the trustee an employee or agent of the management company or institutional partner of the charter school(s) governed by the Education Corporation?

Yes No

If **Yes**, for each school, please provide a description of the position(s) you hold, your responsibilities, your salary and your start date.

4. Identify each interest/transaction (and provide the requested information) that you or any of your immediate family members or any persons who live with you in your house have held or engaged in with the charter school(s) governed by the Education Corporation during the time you have served on the board, and in the six-month period prior to such service. If there has been no such financial interest or transaction, write **None**. Please note that if you answered **Yes** to Questions 2-4 above, you need not disclose again your employment status, salary, etc.

Date(s)	Nature of Financial Interest/Transaction	Steps taken to avoid a conflict of interest, (e.g., did not vote, did not participate in discussion)	Name of person holding interest or engaging in transaction and relationship to yourself

None	None	None	None
------	------	------	------

Please write "None" if applicable. Do not leave this space blank.

5. Identify each individual, business, corporation, union association, firm, partnership, committee proprietorship, franchise holding company, joint stock company, business or real estate trust, non-profit organization, or other organization or group of people doing business with the school(s) governed by the Education Corporation and in which such entity, during the time of your tenure as a trustee, you and/or your immediate family member(s) or person(s) living in your house had a financial interest or other relationship. If you are a member, director, officer or employee of an organization formally partnered with the school(s) that is/are doing business with the school(s) through a management or services agreement, please identify only the name of the organization, your position in the organization, and the relationship between such organization and the school(s). If there was no financial interest, write None.

Organization conducting business with the school(s)	Nature of business conducted	Approximate value of the business conducted	Name of Trustee and/or immediate family member of household holding an interest in the organization conducting business with the school(s) and the nature of the interest	Steps Taken to Avoid Conflict of Interest
None	None	None	None	None

Please write "None" if applicable. Do not leave this space blank.

Signature _____

Date _____

Please note that this document is considered a public record and as such, may be made available to members of the public upon request under the Freedom of Information Law. Personal contact information provided below will be redacted.

Business Telephone: 212-439-9270 _____

Business Address: N/A _____

E-mail Address: mitch_kurz@att.net _____

Home Telephone: 212-439-9270 _____

Home Address: 176 East 71st Street New York, NY 10021 _____

Disclosure of Financial Interest by a Current or Proposed Charter School Education Corporation Trustee

Trustee Name:

Denise Fuller _____

Name of Charter School Education Corporation (for an unmerged school, this is the Charter School Name):

Harlem Children's Zone Promise Academy I Charter School _____

1. List all positions held on the education corporation board (e.g., president, treasurer, parent representative).

Member

2. Is the trustee an employee of any school operated by the Education Corporation?
 Yes No

If **Yes**, for each school, please provide a description of the position(s) you hold, your responsibilities, your salary and your start date.

3. Is the trustee an employee or agent of the management company or institutional partner of the charter school(s) governed by the Education Corporation?

Yes No

If **Yes**, for each school, please provide a description of the position(s) you hold, your responsibilities, your salary and your start date.

4. Identify each interest/transaction (and provide the requested information) that you or any of your immediate family members or any persons who live with you in your house have held or engaged in with the charter school(s) governed by the Education Corporation during the time you have served on the board, and in the six-month period prior to such service. If there has been no such financial interest or transaction, write **None**. Please note that if you answered **Yes** to Questions 2-4 above, you need not disclose again your employment status, salary, etc.

Date(s)	Nature of Financial Interest/Transaction	Steps taken to avoid a conflict of interest, (e.g., did not vote, did not participate in discussion)	Name of person holding interest or engaging in transaction and relationship to yourself

None	None	None	None
------	------	------	------

Please write "None" if applicable. Do not leave this space blank.

5. Identify each individual, business, corporation, union association, firm, partnership, committee proprietorship, franchise holding company, joint stock company, business or real estate trust, non-profit organization, or other organization or group of people doing business with the school(s) governed by the Education Corporation **and** in which such entity, during the time of your tenure as a trustee, you and/or your immediate family member(s) or person(s) living in your house had a financial interest or other relationship. If you are a member, director, officer or employee of an organization formally partnered with the school(s) that is/are doing business with the school(s) through a management or services agreement, please identify only the name of the organization, your position in the organization, and the relationship between such organization and the school(s). If there was no financial interest, write **None**.

Organization conducting business with the school(s)	Nature of business conducted	Approximate value of the business conducted	Name of Trustee and/or immediate family member of household holding an interest in the organization conducting business with the school(s) and the nature of the interest	Steps Taken to Avoid Conflict of Interest
None	None	None	None	None

Please write "None" if applicable. Do not leave this space blank.

Signature _____

Date _____

Please note that this document is considered a public record and as such, may be made available to members of the public upon request under the Freedom of Information Law. Personal contact information provided below will be redacted.

Business Telephone: 212-415-4143 _____

Business Address: 799 U.N. Plaza New York, NY 10017 _____

E-mail Address: NashD@state.gov _____

Home Telephone: 212-415-4143 _____

Home Address: 100 West 121st Street New York, NY 10027 _____

Disclosure of Financial Interest by a Current or Proposed Charter School Education Corporation Trustee

Trustee Name:

Alfonso Wyatt _____

Name of Charter School Education Corporation (for an unmerged school, this is the Charter School Name):

Harlem Children's Zone Promise Academy I Charter School _____

1. List all positions held on the education corporation board (e.g., president, treasurer, parent representative).

Member

2. Is the trustee an employee of any school operated by the Education Corporation?
 Yes No

If **Yes**, for each school, please provide a description of the position(s) you hold, your responsibilities, your salary and your start date.

3. Is the trustee an employee or agent of the management company or institutional partner of the charter school(s) governed by the Education Corporation?

Yes No

If **Yes**, for each school, please provide a description of the position(s) you hold, your responsibilities, your salary and your start date.

4. Identify each interest/transaction (and provide the requested information) that you or any of your immediate family members or any persons who live with you in your house have held or engaged in with the charter school(s) governed by the Education Corporation during the time you have served on the board, and in the six-month period prior to such service. If there has been no such financial interest or transaction, write **None**. Please note that if you answered **Yes** to Questions 2-4 above, you need not disclose again your employment status, salary, etc.

Date(s)	Nature of Financial Interest/Transaction	Steps taken to avoid a conflict of interest, (e.g., did not vote, did not participate in discussion)	Name of person holding interest or engaging in transaction and relationship to yourself

None	None	None	None
------	------	------	------

Please write "None" if applicable. Do not leave this space blank.

5. Identify each individual, business, corporation, union association, firm, partnership, committee proprietorship, franchise holding company, joint stock company, business or real estate trust, non-profit organization, or other organization or group of people doing business with the school(s) governed by the Education Corporation **and** in which such entity, during the time of your tenure as a trustee, you and/or your immediate family member(s) or person(s) living in your house had a financial interest or other relationship. If you are a member, director, officer or employee of an organization formally partnered with the school(s) that is/are doing business with the school(s) through a management or services agreement, please identify only the name of the organization, your position in the organization, and the relationship between such organization and the school(s). If there was no financial interest, write **None**.

Organization conducting business with the school(s)	Nature of business conducted	Approximate value of the business conducted	Name of Trustee and/or immediate family member of household holding an interest in the organization conducting business with the school(s) and the nature of the interest	Steps Taken to Avoid Conflict of Interest
None	None	None	None	None

Please write "None" if applicable. Do not leave this space blank.

Signature _____

Date _____

Please note that this document is considered a public record and as such, may be made available to members of the public upon request under the Freedom of Information Law. Personal contact information provided below will be redacted.

Business Telephone: 212-925-6675 _____

Business Address: Fund for the City of New York, 121 Avenue of the Americas, 6th Floor, New York, NY 10013-1590 _____

E-mail Address: alfonsowyatt09@gmail.com _____

Home Telephone: 212-925-6675 _____

Home Address: 175-60 Underhill Avenue Fresh Meadows, NY 11365 _____

Disclosure of Financial Interest by a Current or Proposed Charter School Education Corporation Trustee

Trustee Name:

Aisha Tomlinson _____

Name of Charter School Education Corporation (for an unmerged school, this is the Charter School Name):

Harlem Children's Zone Promise Academy I Charter School _____

1. List all positions held on the education corporation board (e.g., president, treasurer, parent representative).

Member

2. Is the trustee an employee of any school operated by the Education Corporation?
 Yes No

If **Yes**, for each school, please provide a description of the position(s) you hold, your responsibilities, your salary and your start date.

3. Is the trustee an employee or agent of the management company or institutional partner of the charter school(s) governed by the Education Corporation?
 Yes No

If **Yes**, for each school, please provide a description of the position(s) you hold, your responsibilities, your salary and your start date.

4. Identify each interest/transaction (and provide the requested information) that you or any of your immediate family members or any persons who live with you in your house have held or engaged in with the charter school(s) governed by the Education Corporation during the time you have served on the board, and in the six-month period prior to such service. If there has been no such financial interest or transaction, write **None**. Please note that if you answered **Yes** to Questions 2-4 above, you need not disclose again your employment status, salary, etc.

Date(s)	Nature of Financial Interest/Transaction	Steps taken to avoid a conflict of interest, (e.g., did not vote, did not participate in discussion)	Name of person holding interest or engaging in transaction and relationship to yourself

None	None	None	None
------	------	------	------

Please write "None" if applicable. Do not leave this space blank.

5. Identify each individual, business, corporation, union association, firm, partnership, committee proprietorship, franchise holding company, joint stock company, business or real estate trust, non-profit organization, or other organization or group of people doing business with the school(s) governed by the Education Corporation and in which such entity, during the time of your tenure as a trustee, you and/or your immediate family member(s) or person(s) living in your house had a financial interest or other relationship. If you are a member, director, officer or employee of an organization formally partnered with the school(s) that is/are doing business with the school(s) through a management or services agreement, please identify only the name of the organization, your position in the organization, and the relationship between such organization and the school(s). If there was no financial interest, write None.

Organization conducting business with the school(s)	Nature of business conducted	Approximate value of the business conducted	Name of Trustee and/or immediate family member of household holding an interest in the organization conducting business with the school(s) and the nature of the interest	Steps Taken to Avoid Conflict of Interest
None	None	None	None	None

Please write "None" if applicable. Do not leave this space blank.

Signature _____

Date _____

Please note that this document is considered a public record and as such, may be made available to members of the public upon request under the Freedom of Information Law. Personal contact information provided below will be redacted.

Business Telephone: 646-337-8610 _____

Business Address: N/A _____

E-mail Address: atominson@entertainmentpartners.com _____

Home Telephone: 646-337-8610 _____

Home Address: 2034 7th Avenue New York, NY 10027 _____



Entry 9 BOT Table

Created: 07/08/2016

Last updated: 08/01/2016

Page 1

1. Current Board Member Information

	Trustee Name	Email Address	Position on the Board	Committee Affiliations	Voting Member? (Y/N)	Area of Expertise, and/or Additional Role at School (parent, staff member, etc.)	Number of Terms Served and Length of Each (Include election date and term expiration)
1	Geoffrey Canada	tfountain@hcz.org	Chair/Board President	Audit Committee	Yes	Founder of Harlem Children's Zone	7 terms (ending in June of 2005, 2007, 2009, 2011, 2013, 2014, 2016)
2	Anne Williams-Isom	narnold@hcz.org	Chair/Board President	Audit Committee	Yes	CEO of Harlem Children's Zone	1 term completed in June 2015
3	Mitch Kurz	mitch_kurz@worldnet.att.net	Secretary	Audit Committee	Yes	Academic Dean and Director for the Bronx Center for Science & Mathematics	6 terms (ending in June of 2005, 2007, 2009, 2011, 2013, 2015)
						Invemed	6 terms (ending in June of 2006,

4	Kenneth Langone	Pam@investmed.com	Other	N/A	Yes	Associates Inc.	2008, 2010, 2012, 2014, 2016)
5	Stanley Druckenmiller	carmela@duquesne.com	Trustee/Member	No	Yes	Duquesne Family Office	6 terms (ending in June of 2006, 2008, 2010, 2012, 2014, 2016)
6	Denise Fuller	nashd@state.gov	Trustee/Member	No	Yes	United Nations	5 terms (ending in June of 2008, 2010, 2012, 2014, 2015)
7	Arlene Gibson	jessicate2@aol.com	Trustee/Member	No	Yes	Former Headmistress of the Spence School	5 terms (ending in June of 2008, 2010, 2012, 2014, 2016)
8	Alfonso Wyatt	alfonsowyaatt09@gmail.com	Trustee/Member	No	Yes	The Greater Allen Cathedral	6 terms (ending in June of 2006, 2008, 2010, 2012, 2014, 2016)
9	Aisha Tomlinson	atomlinson917@gmail.com	Parent Representative	No	Yes	Parent	8 terms (each ending in June of every year from 2009 - 2016)
10							
11							

12							
13							
14							
15							
16							
17							
18							
19							
20							

2. Total Number of Members on June 30, 2015

10

3. Total Number of Members Joining the Board 2015-16 School Year

0

4. Total Number of Members Departing the Board during the 2015-16 School Year

0

5. Number of Voting Members 2015-16, as set by the by-laws, resolution or minutes

10

6. Number of Board Meetings Conducted in the 2015-16 School Year

9

7. Number of Board Meetings Scheduled for the 2016-17 School Year

12

Thank you.

All HCZ Promise Academy I Charter School Board Minutes can be found at the link below:

<http://www.hczpromise.org/community/board-meeting-documents>

Promise Academy I: Enrollment & Retention Efforts

At Promise Academy, and the closely affiliated Harlem Children's Zone, we are committed to recruiting and serving the most at-risk families in our district. Our free and reduced lunch numbers are similar to those of the district at large, even though all students receive free lunch and breakfast, so that families may feel less pressure to complete lunch forms. The portion of our student body with Individual Education Plans, which (of course) fluctuates, has generally been similar to the special education rate of the district as a whole in recent years. The portion of students who are officially designated as English Language Learners has generally been similar to the district as a whole. While we do target recruitment and enrollment efforts at families for who English is not the primary language (see below for details), we also intervene early (starting to work with our students when they are three years old). We believe this early intervention helps our young people develop the necessary English skills to pass the NYSITELL assessment at Kindergarten entry, preventing them from ever being officially labeled as English Language Learners.

Strategies for English Language Learners Recruitment for the Harlem Children's Zone (HCZ) and Promise Academy starts when parents are expecting or have a child under the age of four. The Baby College, one of the HCZ programs, blankets the neighborhood with teams of outreach workers who encourage participation of all families with a child in appropriate age range (expected to age three). These outreach workers talk to people on the street, go door-to-door in apartment buildings, and advertise at local businesses and non-profits. The outreach teams include workers who speak Spanish and French, as well as some of the more common West African dialects spoken by many recent immigrants in the neighborhood. Recruitment materials are offered in Spanish and French and the Baby College application is also available in Spanish and French. Baby College has approximately five nine-week cycles each year and each cycle has a French class and a Spanish class available.

After participation in Baby College, HCZ staff remains in contact with parents. They are encouraged to participate in special events and receive check-in phone calls. In the summer of the year when their child turns three, Baby College graduates are encouraged to enter the Promise Academy lottery. The lottery is also advertised through all of the HCZ programs in the neighborhood, more than 30 distinct program sites.

Families selected in the lottery are offered the chance to participate in Three Year Old Journey, a 12 week program of Saturday classes for parents while their children receive enrichment in pre-school classrooms. When the children are four, they are offered a spot in Harlem Gems, an enriched pre-Kindergarten program with a focus on early literacy development which provides instruction in Spanish and French to all students.

While not all Promise Academy Kindergarteners have participated in the HCZ early childhood programs, the majority of them have. Consequently, we believe that our results on the NYSITELL underestimate the number of students who are learning English primarily at school. While there is no equivalent exam

for pre-Kindergarten students, we think that if we were able to assess our students when entering Gems, we would find a higher ELL rate.

Free and Reduced Lunch Strategy Promise Academy has lottery preferences that prioritize low-income families. After siblings, the first priority is for families who live in the Saint Nicholas Housing Project (the NYCHA development where our school building is located). According to NYCHA, the average income for families in Saint Nicholas in 2014 was \$23,030. The next priority in the lottery is for students who live in the local school district and whose families would qualify for free or reduced lunch. With outreach efforts that blanket the neighborhood (see the ELL section above) and a particular recruitment focus on Saint Nicholas, we are making continual efforts to attract and retain children from low-income families.

In addition, the Harlem Children's Zone runs both an Early Head Start program, for children three years old and under, and a Head Start program that starts at age three. These programs require that 90% of participants come from families with incomes below the poverty line. We strongly encourage all participants in these programs to apply to Promise Academy.

Special Education Strategy

Promise Academy's special education rate has been similar to the district rate in recent years. While there is fluctuation, partially based on time for referrals to be completed and our CSE's approach to declassification, our long-term average does appear to be comparable to the local school district. In recent years we've made a very conscious effort to partner with parents to identify any special needs of their children. While many parents are reluctant to have their children classified as special education, we've worked to demonstrate that there is no stigma to having an IEP and considerable benefit to having students' needs identified and providing them with the appropriate services. These efforts have helped us to be more informed about the needs of families whose children require special education services.



Entry 12 Teacher and Administrator Attrition

Created: 07/08/2016

Last updated: 08/01/2016

Report changes in teacher and administrator staffing.

Page 1

Instructions for completing the Teacher and Administrator Attrition Tables

The following tables reflect formatting in the online portal required for Regents authorized charter schools. Schools should provide, for teachers and administrators only, the full time equivalent (FTE) of staff on June 30, 2015; the FTE for added staff from July 1, 2015 through June 30, 2016; and the FTE for any departed staff from July 1, 2015 through June 30, 2016 using the two tables provided.

2015-16 Teacher Attrition Table

	FTE Teachers on June 30, 2015	FTE Teachers Departed 7/1/15 - 6/30/16	FTE Teachers Filling Vacant Positions 7/1/15 - 6/30/16	FTE Teachers Added in New Positions 7/1/15-6/30/16	FTE of Teachers on June 30, 2016
	47	19	30	3	61

2015-16 Administrator Position Attrition Table

	FTE Administrative Positions on June 30, 2015	FTE Administrators Departed 7/1/15 - 6/30/16	FTE Administrators Filling Vacant Positions 7/1/15 - 6/30/16	FTE Administrators Added in New Positions 7/1/15-6/30/16	FTE Administrative Positions on June 30, 2016
	14	2.5	1	.5	13

Thank you



Entry 13 Uncertified Teachers

Created: 07/25/2016

Last updated: 07/29/2016

Page 1

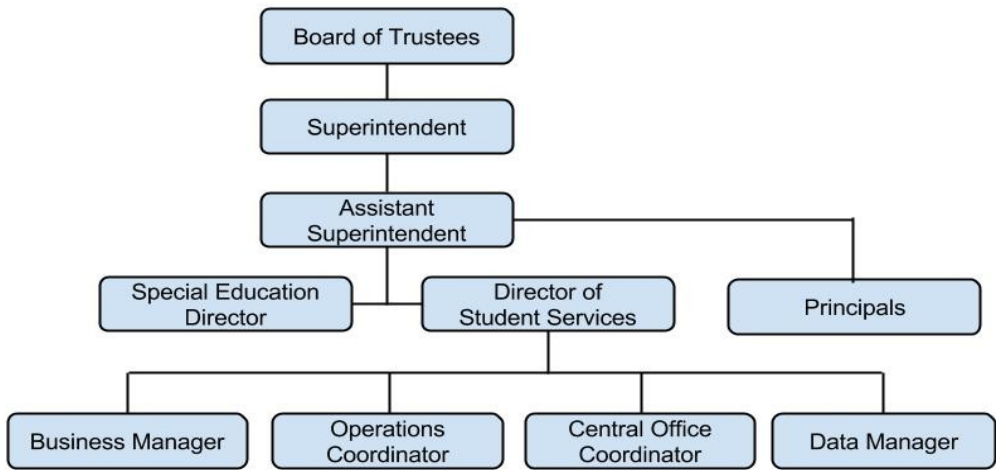
The table below is reflective of the information collected through the online portal for compliance with New York State Education Law 2854(3)(a-1) for teaching staff qualifications. Enter the relevant full time equivalent (FTE) count of teachers in each column. For example, a school with 20 full time teachers and 5 half time teachers would have an FTE count of 22.5. If more than one column applies to a particular teacher, please select one column for the FTE count.

Staff Qualifications (June 30, 2016)

Note: Columns should sum to the FTE count of Teachers on June 30, 2016, and each teacher should be in only one column.

1. Total FTE Count of Uncertified Teachers (6-30-16)	12
2. FTE count of uncertified teacher with at least three years of elementary, middle or secondary classroom teaching experience (6-30-16)	8
3. FTE count of uncertified teachers who are tenured or tenure track college faculty (6-30-16)	0
4. FTE count of uncertified teachers with two years of Teach for America experience (6-30-16)	0
5. FTE count of uncertified teachers with exceptional business, professional, artistic, athletic, or military experience (6-30-16)	0
6. FTE count of uncertified teachers who do not fit into any of the prior four categories (6-30-16)	4

Thank you.





2016-2017

Promise Academy Calendar

Jul 2016						
S	M	T	W	Th	F	S
						2
3	4	5	6	7	8	9
10	11	12	13	14	15	16
17	18	19	20	21	22	23
24	25	26	27	28	29	30
31						

Aug 2016						
S	M	T	W	Th	F	S
						6
7	8	9	10	11	12	13
14	15	16	17	18	19	20
21	22	23	24	25	26	27
28	29	30	31			

Sep 2016						
S	M	T	W	Th	F	S
					1	2
3	4	5	6	7	8	9
10	11	12	13	14	15	16
17	18	19	20	21	22	23
24	25	26	27	28	29	30

Oct 2016						
S	M	T	W	Th	F	S
						1
2	3	4	5	6	7	8
9	10	11	12	13	14	15
16	17	18	19	20	21	22
23	24	25	26	27	28	29
30	31					

Nov 2016						
S	M	T	W	Th	F	S
		1	2	3	4	5
6	7	8	9	10	11	12
13	14	15	16	17	18	19
20	21	22	23	24	25	26
27	28	29	30			

Dec 2016						
S	M	T	W	Th	F	S
					1	2
3	4	5	6	7	8	9
10	11	12	13	14	15	16
17	18	19	20	21	22	23
24	25	26	27	28	29	30
31						

Jan 2017						
S	M	T	W	Th	F	S
1	2	3	4	5	6	7
8	9	10	11	12	13	14
15	16	17	18	19	20	21
22	23	24	25	26	27	28
29	30	31				

Feb 2017						
S	M	T	W	Th	F	S
		1	2	3	4	
5	6	7	8	9	10	11
12	13	14	15	16	17	18
19	20	21	22	23	24	25
26	27	28				

Mar 2017						
S	M	T	W	Th	F	S
			1	2	3	4
5	6	7	8	9	10	11
12	13	14	15	16	17	18
19	20	21	22	23	24	25
26	27	28	29	30	31	

Apr 2017						
S	M	T	W	Th	F	S
						1
2	3	4	5	6	7	8
9	10	11	12	13	14	15
16	17	18	19	20	21	22
23	24	25	26	27	28	29
30						

May 2017						
S	M	T	W	Th	F	S
		1	2	3	4	5
6	7	8	9	10	11	12
13	14	15	16	17	18	19
20	21	22	23	24	25	26
27	28	29	30	31		

Jun 2017						
S	M	T	W	Th	F	S
					1	2
3	4	5	6	7	8	9
10	11	12	13	14	15	16
17	18	19	20	21	22	23
24	25	26	27	28	29	30

School closed for students, teachers & staff		
Jul. 4		Independence Day
Sep. 5		Labor Day
Oct. 10		Columbus Day Observed
Nov. 24		Thanksgiving Day
Dec. 26		Christmas Day Observed
Jan. 2		New Year's Day Observed
Jan. 16		Dr. Martin Luther King, Jr. Day
Feb. 20		Presidents Day
May 29		Memorial Day

School closed for students and teachers only*		
Jul. 1		Summer Intermission
Jul. 7		Eid al-Fitr (2016)
Aug. 1-26		Summer Recess
Sep. 12		Eid al-Adha
Oct. 12		Yom Kippur
Nov. 11		Veterans Day Observed
Nov. 24-25		Thanksgiving Recess
Dec. 26-Jan. 2		Winter Recess
Feb. 20-24		Midwinter Recess
Apr. 10-14		Spring Recess
Jun. 26		Eid al-Fitr (2017)
Jun. 26-30		Summer Intermission begins

School closed for students only*		
Aug. 29-Sep. 2		Staff return for orientation
Nov. 8		Election Day (prof. develop.)

Important date (school is open)		
Jul. 5		2016-17 school year begins
Jul. 29		Summer session ends
Jan. 17		100th day of school
Jan. 24-27		Regents Exams
Mar. 28-30		NYS 3-8 ELA Exam
May 2-4		NYS 3-8 Math Exam
May 2		Teacher Appreciation Day
May 24-Jun. 2		Grades 4 & 8 Science Performance Test
Jun. 5		Grades 4 & 8 Science Written Exam
Jun. 14-16, 19-22		Regents Exams

Notes

First day of instruction is 9/6 and last day is 6/23
 202 instruction days (184 + 18 summer session days)
 HS is open on scoring days (1/30 & 6/23)
 School is open for Rosh Hashanah (10/3 & 10/4)